



digiFLOW - ST2

Advanced Stand-alone Uroflometry

The digiFLOW-ST2 is a compact and Hi-Tech digital Uroflometry system designed for practical, everyday flow studies. An option of the AUTO mode on the front panel to start investigation automatically when the patient starts voiding. The test data is stored in the memory of the Control Unit and can be retrieved any time for printing before the next test starts. The printer provides you with a simple, crisp and clear printout with uroflometry results.



Salient Features

- ✍ Fully Automatic or Manual operation
- ✍ User Friendly system.
- ✍ Uses in-built Thermal Technology Printer.
- ✍ The printer requires no maintenance, no ink refilling.
- ✍ Prints crisp and clear High Resolution printouts.
- ✍ Test Duration up to 6 minutes
- ✍ Infinite Standby time in AUTO mode.
- ✍ Multiple tests can be conducted successively without emptying the jar every time.
- ✍ Auto / Manual Start & Stop
- ✍ Patient Data with test results is stored in the memory and can be retrieved any time for printing before starting the next test.
- ✍ Maintenance free
- ✍ Printout contains Graph and tabular text data
- ✍ Flow Measurement Range : 0~75 ml/sec.
- ✍ Volume Measurement Range : 0~750 ml.
- ✍ Removes artefact automatically
- ✍ Reusable urine collection jar
- ✍ High precision sensor for flow and volume
- ✍ Micturition chair (optional)
- ✍ Compact & Portable system.
- ✍ Choice of Stand and Chair (both optional)

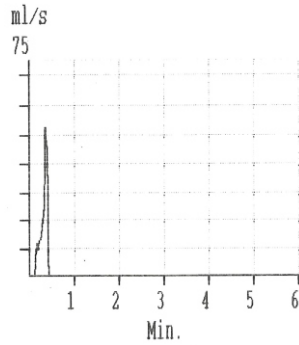
Sample Test Report

UROFLOMETRY

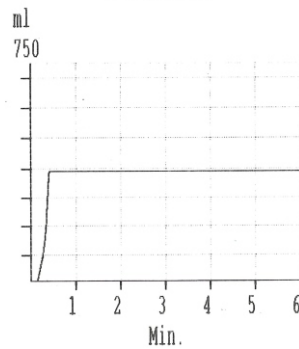
Name:

Date:

FLOW



VOLUME

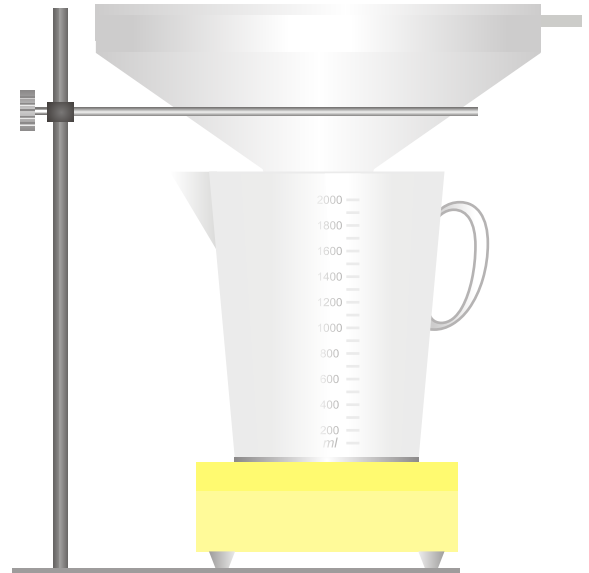


Volume : 395 ml
 Flow Time : 19 sec
 QMAX : 53 ml/sec
 Time to Peak: 19 sec
 Voiding Time: 19 sec
 Intervals : 1
 Delay : 5 sec
 QAVE : 21 ml/s
 Scan : Normal

NOTE: Copy the report on a plain paper to preserve. Report should not be used for medico-legal process. The report requires clinical correlation for any clinical action.

digiFLOW
 UROFLOMETRY SYSTEM V3.00
 COPYRIGHT Apex MediTech,
 2000-2018
 www.Apex-Meditech.com

Optional Micturition Stand



Precision Flow Sensor





Technical Specifications :

1. Control Unit	Based on Ultra High Speed Micro Processor
• Supply Voltage	91-256V AC @ 50 Hz
• Power	20 Watts (max)
• Dimensions	290W X 120H X 290D mm (shoes folded)
• Weight	2.2 Kg
• Memory type	Volatile
• Memory capacity	One test (Last conducted test till the unit is powered)
• Flow Range	0~75ml/sec.
• Volume Range	0~750ml
• Test duration	360sec.
• LED Indications	Auto/Start, Voiding, Urine present, Jar full, Printing
• Jar capacity	2000ml, Use only supplied plastic jar.
• Key Board	Feather touch
• Cabinet shoes	Retractable for better viewing
• Sensor cable length	4.5mtr.
2 Sensor Unit	.
• Dimensions	165 dia X 70 H mm (without cable)
• Weight	1.2 Kg.
• Sensor type	Load cell
3 Printer	.
• Printing method	Direct Thermal Printing
• Resolution / Print width	203 DPI / 2" (50.8mm) approx
• Paper Loading	Easy locking cover type
• Cutter	Manual
• Paper	digiFLOW ST2 Premium printer paper
4 Collection Jar	.
• Capacity	2 ltrs.
• Dimensions	200 dia X 212 H mm approx.
• Weight	150 gms
5 Report	.
• Graphical data	Flow in ml/sec., Volume in ml.
• Tabular data	Volume Voided, Peak flow, Voiding time, Flow time, Delay, Time to peak, Intervals and Average flow rate.
• Number of copies	Single or multiple (as many as needed before starting the next test or switching off the system).
• Customised letterhead	Optional

Manufactured by :



Apex MediTech

S No.635/1, Plot 49, Vaibhav Society,
Canara Bank Lane, Off Swami Vivekanand Road,
Bibwewadi, Pune 411037. India
Tel : ++91(20) - 24410630, 24410634
E-mail : sales@apex-meditech.com

Quality approved to :
ISO 13485:2016
ISO 9001:2015

www.Apex-Meditech.com

Specifications are subject to change without prior notice

digiFLOW - ST2